

# ENKELBOX EEC RANGE

Centrifugal box fan with external rotor EC motor, for duct.

**Basic, insulated and filter versions**

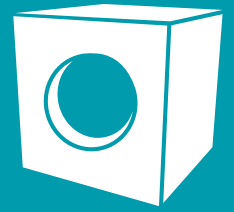
CABINET FANS



Cabinet fans

# ENKELBOX EEC RANGE

Centrifugal box fan with external rotor EC motor, for duct. Basic, insulated and filter versions



## ◦ Advantage

- Centrifugal box with external rotor EC motor, for duct.
- With the heart of our revolutionary ENKELFAN EEC, an asynchronous motor plug-fan with high efficiency and reduced dimensions.
- Low pressure fan suitable for simple flow residential and commercial controlled mechanical ventilation (CMV) applications.
- Integrated safety switch and PMR analog potentiometer to control the speed of the machine and achieve the most appropriate performance without wasting energy and with a reduction in sound power.

## ◦ Summary of range and flow rates

- ENKELBOX EEC
- ENKELBOX FILTER EEC
- ENKELBOX PLUS EEC

- Available sizes: impellers from Ø155 to 450 (ENKELBOX PLUS EEC available up to Ø630).
- Maximum flows: 17.000 m<sup>3</sup>/h.

## ◦ Applications

- Working temperature range from -20°C to 60°C.
    - Air renewal in office buildings, shopping centers, warehouses, etc.
    - Kitchen hoods.
    - Light duty industrial applications with clean or slightly dusty air.
- Designed for duct installation, they are indicated for:
- Air renewals in simple-flow residential and commercial controlled mechanical ventilation (CMV) applications.
  - Working temperature range from -20°C to 60°C.

Cabinet fans

# ENKELBOX EEC

Centrifugal box with  
external rotor EC motor



Click on each photo to  
see the product in our  
selection program

## ◦ Manufacturing features

- Inline ventilation box made of galvanized steel for duct connection.
- Plug-type fan with self-cleaning impeller with back curved blades (backward), high performance and single inlet, direct driven. Dynamically balanced to minimize noise and vibration. Polyamide reinforced impeller for models 155 and 190 and aluminum impellers for the rest.
- High efficiency (IE4 for three phase motors and IE5 for single motors), low noise external rotor EC motor. Speed control through a 0-10V or PWM signal. Single-phase 230V 50/60Hz power supply for models 155 to 310 and three-phase 400V 50/60Hz for sizes 355 and 450. IP54 motor and class B insulation.
- The box is supplied with a safety switch with potentiometer for a total regulation.
- Circular suction mouth to facilitate duct connection. Open outlet.

**Simplified inline  
ventilation unit**

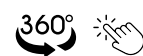
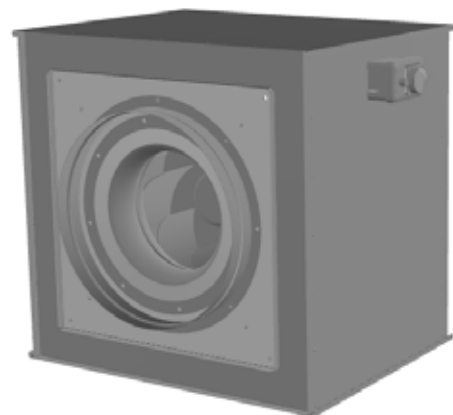
## ◦ Applications

- Designed for duct installation, they are indicated for:
- Air renewals in simple flow residential, commercial and controlled mechanical ventilation (CMV) applications.
  - Working temperature range from -20°C to 60°C.

## ◦ Under request

- Fan (size between 250 and 450) with k-factor reading.

## ◦ 360° view



Click on the image to see the  
product in 360° view with an  
Internet browser

## Cabinet fans

# ENKELBOX FILTER EEC

Centrifugal box with filter  
and external rotor ec motor



Click on each photo to  
see the product in our  
selection program



## ◦ Manufacturing features

◦ Inline ventilation box made of galvanized steel for duct connection. Box with particle filter(s) integrated. The box is available with a filter ISO Coarse $\geq$ 60% (G4) or with double filtration satge ISO Coarse $\geq$ 60% (G4) + ePM $\geq$ 50% (F7). Easy filter maintance due to Removable filter holder frame from both from the top and from de bottom. Optimized air intake to maximize performance.

◦ Plug-type fan with self-cleaning impeller with back curved blades (backward), high performance and single inlet, direct driven. Dynamically balanced to minimize noise and vibration. Polyamide reinforced impeller for models 155 and 190 and aluminum impellers for the rest.

◦ High efficiency (IE4 for three phase motors and IE5 for single motors), low noise external rotor EC motor. Speed control through a 0-10V or PWM signal. Single-phase 230V 50/60Hz power supply for models 155 to 310 and three-phase 400V 50/60Hz for sizes 355 and 450. IP54 motor and class B insulation.

◦ The box is supplied with a safety switch with potentiometer for a total regulation.

◦ Circular suction mouth to facilitate duct connection. Open outlet.

**2 etapas de filtración** para mejorar la calidad del aire interior mediante la combinación de distintos tipos de **filtro integrados** dentro de la caja

**ISO COARSE $\geq$ 60% (G4)**

**ISO ePM $\geq$ 50% (F7)**

**ISO ePM $\geq$ 80% (F9)**

## ◦ Applications

Designed for duct installation, they are indicated for:

◦ Air renewals in simple flow residential, commercial and controlled mechanical ventilation (CMV) applications.

◦ Working temperature range from -20°C to 60°C.

## ◦ Under request

◦ Fan (size between 250 and 450) with k-factor reading.

## Cabinet fans

# ENKELBOX PLUS EEC

Centrifugal fan in soundproof box with external rotor EC motor



Click on each photo to see the product in our selection program



## ◦ Manufacturing features

- Ventilation box with 30 mm aluminum profile structure, nylon corners, galvanized sandwich panels with internal insulation rockwool (25mm thickness) class A1 (non-combustible) of 90kg/m<sup>3</sup> density. All panels are equipped with “fastening system” for the quick assembly and disassembly whenever required, either for cleaning, maintenance.
- Plug-type fan with self-cleaning impeller with back curved blades (backward), high performance and single inlet, direct driven. Dynamically balanced to minimize noise and vibration. Polyamide reinforced impeller for models 155 and 190 and aluminum impellers for the rest.
- High efficiency (IE4 for three phase motors and IE5 for single motors), low noise external rotor EC motor. Speed control through a 0-10V or PWM signal. Single-phase 230V 50/60Hz power supply for models 155 to 310 and three-phase 400V 50/60Hz for sizes 355 and 630. IP54 motor and class B insulation.
- The box is supplied with a safety switch with potentiometer for a total regulation.
- Circular suction mouth to facilitate duct connection. Open outlet.

## ◦ Applications

- Designed for duct installation, they are indicated for:
- Air renewal in all types of buildings and industries.
  - Air renewal in office buildings, shopping centers, warehouses, etc.
  - Kitchen hoods.
- Working temperature range from -20°C to 60°C.

## ◦ Under request

- Fan (size between 250 and 450) with k-factor reading.

**Improved version, with aluminum profiles**, which gives it modularity, that is, the possibility of having the air supply ears wherever desired. In addition, it has acoustically and **thermally insulated panels with high-density 90Kg/m<sup>3</sup> rock wool.**

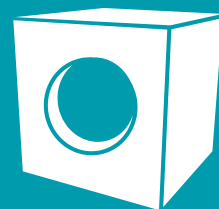
## ENKELBOX PLUS ECC + BOX FILTER



In the ENKELBOX PLUS EEC ventilation unit, **the filters are included in an external module attached to the box or to the system to facilitate access for maintenance. This module is the BOX FILTER.**

# SMART

Smart accessories



## • SCO2 IAQ

CO<sub>2</sub>, temperature, relative humidity sensor.



## • REG FILTER

Constant pressure fan control.



## • REG TWIN

Control auto change over panel for twin fans.



Click on each photo to see the product in our selection program



## VORTICE GROUP COMPANIES

### VORTICE S.P.A

Strada Cerca, 2  
Frazione di Zoate  
20067 Tribiano  
(Milan) Italy  
Tel. (+39) 02 906991  
Fax (+39) 02 90699625  
vortice.com

### VORTICE LIMITED

Beeches House-Eastern  
Avenue Burton upon Trent  
DE13 0BB United Kingdom  
Tel. (+44) 1283 492949  
Fax (+44) 1283 544121  
vortice.ltd.uk

### VORTICE INDUSTRIAL S.R.L.

Via B. Brugnoli 3,  
37063 Isola della Scala  
(Verona) Italy  
Tel. (+39) 045 6631042  
Fax (+39) 045 6631039  
vorticeindustrial.com

### CASALS VENTILACIÓN AIR INDUSTRIAL S.L.

Ctra. Camprodon, s/n 17860  
Sant Joan de les  
Abadesses  
(Girona) Spain  
Tel. (+34) 972720150  
casals.com

### VORTICE LATAM S.A.

Bodega #6  
Zona Franca Este Alajuela,  
Alajuela 20101  
Costa Rica  
Tel. (+506) 2201 6934  
vortice-latam.com

### VORTICE VENTILATION SYSTEM

(Changzhou) Co.LTD  
No. 388 West Huanghe Road  
Building 19, Changzhou  
Post Code: 213000 China  
Tel. (+86) 0519 88990150  
Fax (+86) 0519 88990151  
vortice-china.com

The descriptions and illustrations in this catalogue are intended to be indicative and not binding. Without prejudice to the essential characteristics of the products described and illustrated here, CASALS VENTILACIÓN reserves the right to make, at any time and without notice, changes to parts, aesthetic details or supply of accessories to its products that are deemed to be appropriate for improvement or for any construction or commercial requirement.

This printout completely cancels and replaces all the previous ones.