

# HAUT BLAST

High-flow roof fan with vertical discharge, made of aluminum

ROOF FANS



## ROOF FANS

# HAUT BLAST

### HIGH POWER, OPTIMIZED DESIGN

- **High flow rate:** up to 59.000 m<sup>3</sup>/h (surpassing the 39.600 m<sup>3</sup>/h of other roof fans).
- **Maximum pressure:** 3.000 Pa (4 times more pressure than our most powerful model to date).
- **Four impeller sizes:** 710 mm, 800 mm, 900 mm and 1.000 mm.

### SUPERIOR QUALITY CONSTRUCTION

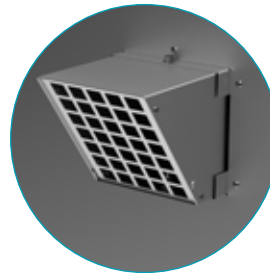
- **Self-cleaning** centrifugal steel impeller with **backward-facing** blades.
- Three-phase asynchronous motor (400V 50Hz), **IP-55, class F**.
- Resistant to demanding environments: **corrosion-resistant** aluminium casing and steel impeller.
- Suitable for air temperatures up to **120°C** with integrated air outlets for motor **cooling**.
- Completely **rain-tight**.
- Optimised outlet flow design for **vertical discharge** efficiency.

### VERSATILE APPLICATIONS

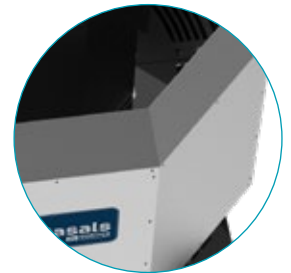
- Smoke extraction.
- Air renewal in buildings and industries.
- Industrial kitchen hoods.
- Cinemas.

### UNDER REQUEST

- Available with acoustic insulation.



motor cooling outlets



anti-corrosion aluminum housing and waterproof design



self-cleaning backward impeller

